

Tigne Residence, Sliema - self-catering Apartments

Tigne Residence offers modern accommodation in self-catering apartments, just around the corner from IELS Sliema school.

Address

Tigne Residence,
Pace Street, Sliema,
Malta

Type of accommodation

Self-catering Apartments

Age of students

18 years and over.

Check-in and check-out

Check-in any day after 14.00.
Check-out any day before
11.00.

Kitchen/cooking facilities

Apartments have a fully
equipped kitchen

Accommodation

Apartments are fully air-
conditioned, with Plasma TV,
Cable, Washing machine and
fully equipped kitchen. Each
bedroom has two single beds,
wardrobe and bedside table.

Bathrooms

Shared bathrooms.

Utilities

Electricity, heat and light are
included. Electricity is 240V,
50Hz AC. UK-type 3-pin plugs
are used.

Internet and phone

Internet at an extra charge.

Laundry

Apartments have a washing
machine.

Security and keys

Students are given key cards
on arrival.

Bed linen, towels and cleaning

Clean bed linen and towels
supplied once a week. Rooms
cleaned once a week.

Deposit & Damage Charges

Lost room key charge: €10.00.
All other damages are charged

at cost. A refundable deposit
of 100 EUR is required on the
first day of school.

Visitors

No visitors, except upon
approval of the management,
are allowed in bedrooms.

Noise and restrictions

Noise must be kept to a
minimum after 23.00 both
inside and outside the
residence.

Availability

Available all year round to
students aged 18 and over.

-  Shared kitchen
-  Shared bathrooms
-  Television
-  Lift
-  Air conditioning
-  Internet on request,
at an extra charge
-  Washing Machine

Distance to school

2 minutes on foot.

2-10 minutes away

IELS school, bus stops,
cafés, pubs and restaurants,
pharmacy, banks, shops and
supermarkets, rocky beach.

Local transport

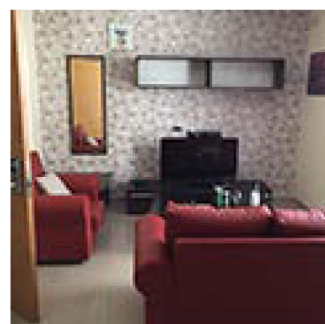
Bus stops are less than 5 mins
from the Apartments. 2-hour
ticket €2.00, 7-day ticket
€21.00. For more details
please visit
www.publictransport.com.mt



A twin standard double bedroom



Splendid bird's-eye view of Tigne



Living Room

